

**FEATURES**

- ▶ Industrial SMD Package
- ▶ Ultra-wide 4:1 Input Voltage Range
- ▶ Fully Regulated Output Voltage
- ▶ I/O Isolation 1500 VDC
- ▶ Operating Ambient Temp. Range -40°C to +80°C
- ▶ Overload and Short Circuit Protection
- ▶ Remote On/Off Control
- ▶ Designed-in Conducted EMI meets EN55022 Class A & FCC Level A
- ▶ Water-washable Process Available(option)
- ▶ Qualified for Lead-free Reflow Solder Process  
According to IPC/JEDEC J-STD-020D.1
- ▶ Tape & Reel Package Available
- ▶ UL/cUL/IEC/EN 60950-1 Safety Approval


**PRODUCT OVERVIEW**

The MINMAX MSGWI06 series is a new range of isolated 6W DC/DC converter modules featuring fully regulated output voltages and ultra-wide 4:1 input voltage ranges. These products are with a very small footprint occupying just 4.5cm<sup>2</sup> (0.7 square in.) on PCB. All models are qualified for lead free reflow solder processes according to IPC J-STD-020D.1. An excellent efficiency allows an operating temperature range of -40° to +80°C. Further features include remote On/Off control and over load protection.

The very compact dimensions of these DC/DC converters make them an ideal solution for many space critical applications in battery-powered equipment and instrumentation.

**Model Selection Guide**

Model Number	Input Voltage (Range)	Output Voltage	Output Current		Input Current		Max. capacitive Load	Efficiency (typ.)
			Max.	Min.	@Max. Load	@No Load		
	VDC	VDC	mA	mA	mA(typ.)	mA(typ.)	μF	%
MSGWI06-24S033	24 (9 ~ 36)	3.3	1450	218	262	30	330	76
MSGWI06-24S05		5	1200	180	316			79
MSGWI06-24S12		12	500	75	301			83
MSGWI06-24S15		15	400	60	301		100	83
MSGWI06-24S24		24	250	38	301			83
MSGWI06-24D05		±5	±600	±90	301			82
MSGWI06-24D12		±12	±250	±38	301		100#	83
MSGWI06-24D15		±15	±200	±30	301			83
MSGWI06-48S033		3.3	1450	218	131			20
MSGWI06-48S05	5	1200	180	158	79			
MSGWI06-48S12	12	500	75	151	83			
MSGWI06-48S15	15	400	60	151	100	83		
MSGWI06-48S24	24	250	38	151		83		
MSGWI06-48D05	±5	±600	±90	151		82		
MSGWI06-48D12	±12	±250	±38	151	100#	83		
MSGWI06-48D15	±15	±200	±30	151		83		

# For each output

**Input Specifications**

Parameter	Model	Min.	Typ.	Max.	Unit
Input Surge Voltage (1 sec. max.)	24V Input Models	-0.7	---	50	VDC
	48V Input Models	-0.7	---	100	
Start-Up Threshold Voltage	24V Input Models	---	---	9	
	48V Input Models	---	---	18	
Under Voltage Shutdown	24V Input Models	---	---	8.5	
	48V Input Models	---	---	17	
Short Circuit Input Power	All Models	---	---	3000	mW
Input Filter		Internal Pi Type			
Conducted EMI		Compliance to EN 55022, class A and FCC part 15, class A			

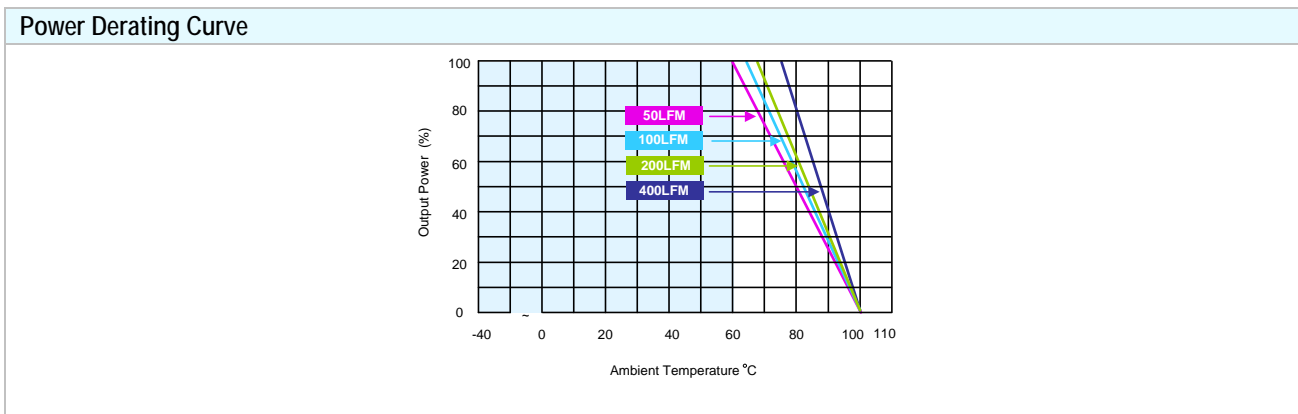
E-mail:sales@minmax.com.tw Tel:886-6-2923150

Remote On/Off Control					
Parameter	Conditions	Min.	Typ.	Max.	Unit
Converter On		2.5V ~ 50VDC or Open Circuit			
Converter Off		-0.7V ~ 0.8V			
Control Input Current (on)	Vin-RC=5V	---	---	500	μA
Control Input Current (off)	Vin-RC=0V	---	---	-500	μA
Control Common		Referenced to Negative Input			
Standby Input Current		---	---	10	mA

Output Specifications					
Parameter	Conditions	Min.	Typ.	Max.	Unit
Output Voltage Setting Accuracy		---	±1.0	±2.0	%Vnom.
Output Voltage Balance	Dual Output, Balanced Loads	---	±1.0	---	%
Line Regulation	Vin=Min. to Max. @Full Load	---	±0.5	±1.0	%
Load Regulation	Io=15% to 100%	---	±0.5	±1.2	%
Ripple & Noise	0-20 MHz Bandwidth	---	---	100	mV <sub>P-P</sub>
Transient Recovery Time	25% Load Step Change	---	300	600	μsec
Transient Response Deviation		---	±3	---	%
Temperature Coefficient		---	±0.01	±0.02	%/°C
Over Load Protection	Foldback	110	150	---	%
Short Circuit Protection		Continuous, Automatic Recovery			

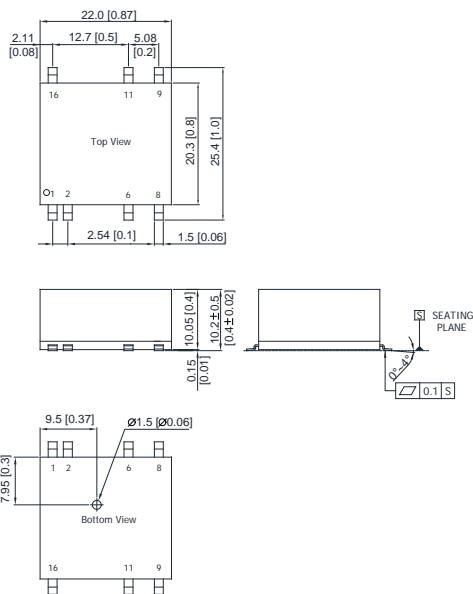
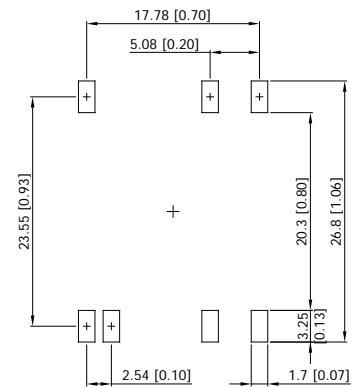
General Specifications					
Parameter	Conditions	Min.	Typ.	Max.	Unit
I/O Isolation Voltage	60 Seconds	1500	---	---	VDC
	1 Second	1800	---	---	VDC
I/O Isolation Resistance	500 VDC	1000	---	---	MΩ
I/O Isolation Capacitance	100KHz, 1V	---	1200	1500	pF
Switching Frequency		---	330	---	KHz
MTBF (calculated)	MIL-HDBK-217F@25°C, Ground Benign	350,000			Hours
Moisture Sensitivity Level (MSL)	IPC/JEDEC J-STD-020D.1	Level 2			
Safety Approvals	UL/cUL 60950-1 recognition (CSA certificate), IEC/EN 60950-1(CB-report)				

Environmental Specifications					
Parameter	Conditions	Min.	Max.	Unit	
Operating Ambient Temperature Range (See Power Derating Curve)	Natural Convection	-40	+80	°C	
Case Temperature		---	+105	°C	
Storage Temperature Range		-50	+125	°C	
Humidity (non condensing)		---	95	% rel. H	
Cooling	Natural Convection				
Lead-free Reflow Solder Process	IPC/JEDEC J-STD-020D.1				



**Notes**

- 1 Specifications typical at Ta=+25°C, resistive load, nominal input voltage and rated output current unless otherwise noted.
- 2 Transient recovery time is measured to within 1% error band for a step change in output load of 75% to 100%
- 3 These power converters require a minimum output loading to maintain specified regulation, operation under no-load conditions will not damage these modules; however, they may not meet all specifications listed.
- 4 We recommend to protect the converter by a slow blow fuse in the input supply line.
- 5 Other input and output voltage may be available, please contact factory.
- 6 Specifications are subject to change without notice.

**Package Specifications**
**Mechanical Dimensions**

**Connecting Pin Patterns**


- ▶ All dimensions in mm (inches)
- ▶ Tolerance: X.X±0.25 (X.XX±0.01)  
X.XX±0.13 (X.XXX±0.005)
- ▶ Pins ±0.05(±0.002)

Pin Connections		
Pin	Single Output	Dual Output
1	Remote On/Off	Remote On/Off
2	-Vin	-Vin
6	NC	Common
8	NC	-Vout
9	+Vout	+Vout
11	-Vout	Common
16	+Vin	+Vin

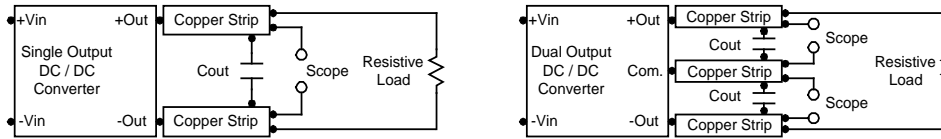
NC: No Connection

Physical Characteristics	
Case Size	: 22.0x20.3x10.2 mm (0.87x0.8x0.4 inches)
Case Material	: Non-Conductive Black Plastic (flammability to UL 94V-0 rated)
Pin Material	: Phosphor bronze
Weight	: 7.8g

Order Code Table	
Standard	For water-washable process
MSGWI06-24S033	MSGWI06-24S033-W
MSGWI06-24S05	MSGWI06-24S05-W
MSGWI06-24S12	MSGWI06-24S12-W
MSGWI06-24S15	MSGWI06-24S15-W
MSGWI06-24S24	MSGWI06-24S24-W
MSGWI06-24D05	MSGWI06-24D05-W
MSGWI06-24D12	MSGWI06-24D12-W
MSGWI06-24D15	MSGWI06-24D15-W
MSGWI06-48S033	MSGWI06-48S033-W
MSGWI06-48S05	MSGWI06-48S05-W
MSGWI06-48S12	MSGWI06-48S12-W
MSGWI06-48S15	MSGWI06-48S15-W
MSGWI06-48S24	MSGWI06-48S24-W
MSGWI06-48D05	MSGWI06-48D05-W
MSGWI06-48D12	MSGWI06-48D12-W
MSGWI06-48D15	MSGWI06-48D15-W

**Test Setup**
**Peak-to-Peak Output Noise Measurement Test**

Use a Cout 0.47μF ceramic capacitor. Scope measurement should be made by using a BNC socket, measurement bandwidth is 0-20 MHz. Position the load between 50 mm and 75 mm from the DC/DC Converter.


**Technical Notes**
**Remote On/Off**

Positive logic remote on/off turns the module on during a logic high voltage on the remote on/off pin, and off during a logic low. To turn the power module on and off, the user must supply a switch to control the voltage between the on/off terminal and the -Vin terminal. The switch can be an open collector or equivalent.

A logic low is -0.7V to 0.8V. A logic high is 2.5V to 50V. The maximum sink current of the switch at on/off terminal during a logic low is -500 μA.

The maximum sink current of the switch at on/off terminal during a logic high is 500μA or open.

**Overcurrent Protection**

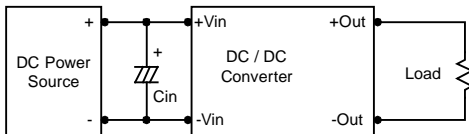
To provide protection in a fault (output overload) condition, the unit is equipped with internal current limiting circuitry and can endure current limiting for an unlimited duration. At the point of current-limit inception, the unit shifts from voltage control to current control. The unit operates normally once the output current is brought back into its specified range.

**Input Source Impedance**

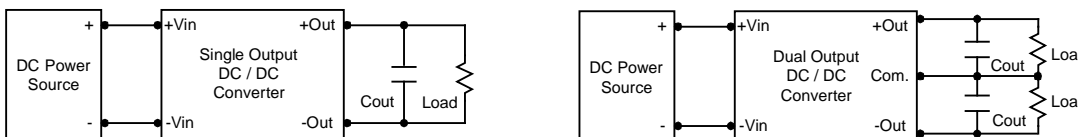
The power module should be connected to a low ac-impedance input source. Highly inductive source impedances can affect the stability of the power module.

In applications where power is supplied over long lines and output loading is high, it may be necessary to use a capacitor at the input to ensure startup.

Capacitor mounted close to the power module helps ensure stability of the unit, it is recommended to use a good quality low Equivalent Series Resistance (ESR < 1.0Ω at 100 KHz) capacitor of a 4.7μF for the 24V input devices and a 2.2μF for the 48V devices.


**Output Ripple Reduction**

A good quality low ESR capacitor placed as close as practicable across the load will give the best ripple and noise performance. To reduce output ripple, it is recommended to use 3.3μF capacitors at the output.


**Maximum Capacitive Load**

The MSGWI06 series has limitation of maximum connected capacitance at the output. The power module may be operated in current limiting mode during start-up, affecting the ramp-up and the startup time. The maximum capacitance can be found in the data sheet.

**Thermal Considerations**

Many conditions affect the thermal performance of the power module, such as orientation, airflow over the module and board spacing. To avoid exceeding the maximum temperature rating of the components inside the power module, the case temperature must be kept below 105°C. The derating curves are determined from measurements obtained in a test setup.

